


Ends
With




Go
Ahead 2

quick fast

Synonyms


Opposites

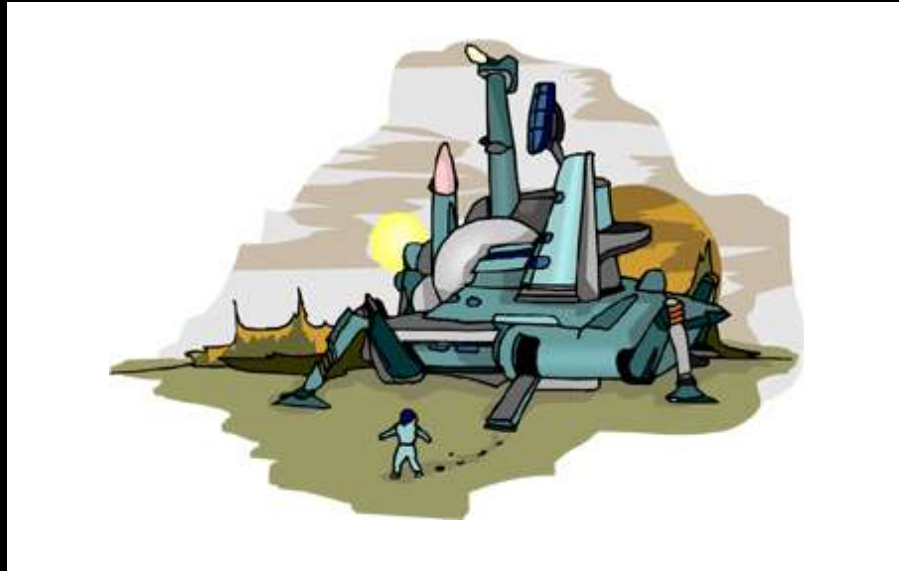

eat
hat
Rhymes

Begins
With




Choice

ar **Words** or
ai aw ew ow
ea ee ea oo
That Have



ar **Words** or
ai aw ew ow
ea ee ea oo
That Have


Miss
A
Turn


Choice


Trade
Places



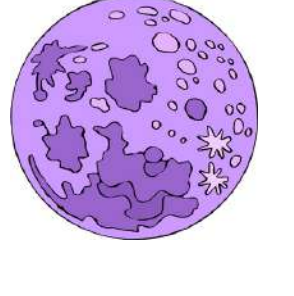

Opposites

quick fast

Synonyms

Free
Candy



Begins
With



Ends
With



Roll
Again


Begins With	Roll Again 	Ends With 	quick fast  Synonyms
----------------	--	--	---

Free Candy 			 Opposites
--	--	--	--

 eat hat Rhymes	 Short Cut	 Go Back 3	Ends With 	 Choice
--	--	---	--	---

	ar Words ai aw ew ow ea ee ea oo That Have
---	---

 eat hat Rhymes

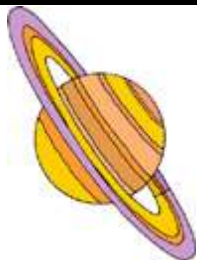
Ends With 	Begins With	Free Candy 	 Trade Places
---	----------------	---	--



quick fast



Synonyms

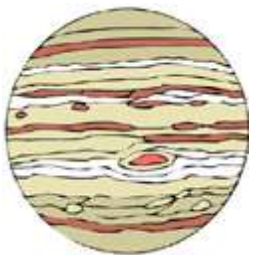



Opposites



Choice

Begins
With



ar **Words** or
ai aw ew ow
ea ee ea oo
That Have



eat
hat
Rhymes



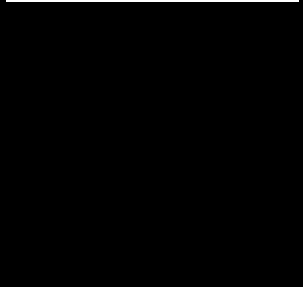
Opposites

quick fast



Synonyms

Fall 
in a Hole
(follow the arrow)




Choice


Go Ahead 2



Ends
With

Begins
With


Lost
follow the arrows



--	--	--	--



Miss
A
Turn




Opposites

quick fast



Synonyms



Lost
follow the arrows

Rule:
A player rolls the dice and advances that number of spaces.
The teacher will ask a question from the category of the space the student lands on. If the student lands on **Choice**, the student can choose whatever category he or she wants. If the student can't answer the question (after a fixed amount of time) the student must go back to the square they were at at the beginning of their turn.



Go
Back 3



Finish



Choice



eat
hat

Rhymes




Ends
With


quick fast



Synonyms



Short Cut



Opposites

ar **Words** or
ai aw ew ow
ea ee ea oo

That Have

Begins
With



eat
hat

Rhymes

ar **Words** or
ai aw ew ow
ea ee ea oo

That Have



ar **Words** or
ai aw ew ow
ea ee ea oo

That Have



Start

Word Skills

© 2010 Lanternfish ESL @ www.bogglesworldesl.com